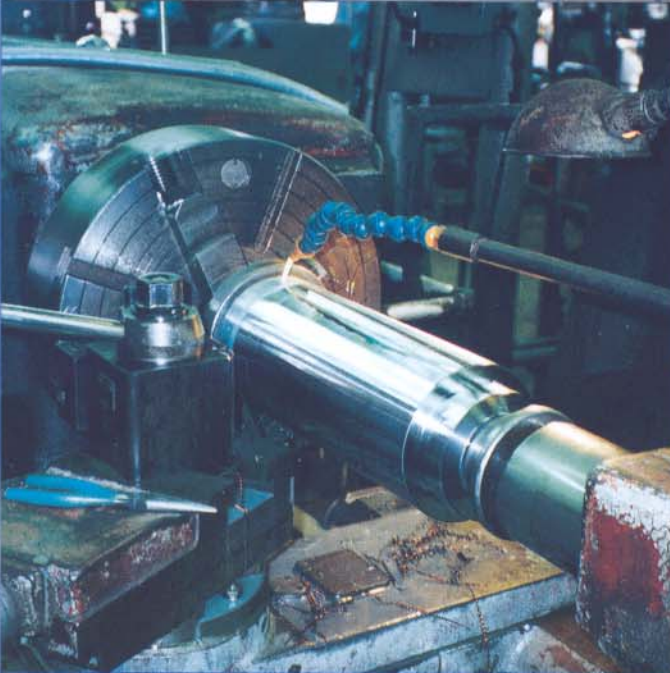




A&E MACHINE & FABRICATION COMPANY



COMPANY PROFILE



A&E Machine and Fabrication Company, originated in 1965, has grown to approximately one hundred employees in three departments, with annual sales of more than \$5,000,000. President and CEO Earl C. Alexander is a 1963 graduate of Texas A&M with a B.A. degree in Industrial Engineering. Our business involves contracting, sub-contracting, machining, fabricating and renting of cranes. Stability and diversification throughout the history of A&E have contributed to

steady growth and has enabled us to attract and retain a diversified staff of professional and dedicated employees, some of whom have been with A&E for more than 20 years. Our staff consists of degreed engineers, industrial professionals and experienced department managers in the areas of estimating, purchasing and quality assurance. As a team, they maintain our consistently high levels of production and quality.



Manufacturing Space	47,000 sq. ft.
Office Space	8,000 sq. ft.
Assembly	50,000 sq. ft.
Yard Storage	9 acres
Material Inventory (avg. on hand)	\$450,000
Facilities for vessels, tanks and steel structures up to 60 feet long and 35 tons.	

M A C H I N E S H O P

A&E maintains a large machine shop staffed with journeymen machinists who are experienced in large and small machine work, and utilize over 30 different machines to better serve our customers.



Computerized Numerical Control (CNC) equipment incorporates the advanced technology for precision work along with high power for heavy-duty machining. Jobs up to 15.75" diameter by 60" with a surface finish of 1000.RMS to 04.RMS may be accomplished.

Large engine lathes take on the big jobs...like the **LeBlonde 36" Swing** with 21' centers, or the **Baldwin-Lima-Hamilton 50" Swing**, with 31' centers.



The **Lucas Horizontal Boring Mill** has a 5" spindle, 72" x 120" table and facing head, along with digital readout, and can handle many types of machining applications.

A&E Machine and Fabrication has been keeping industry in motion since 1965, specializing in quick turnaround jobs for outages/shutdowns, as well as normal lead time delivery jobs for maintenance and construction projects for fossil-fueled power plants, mining, pulp and paper, steel mill and petrochemical industries.

F A B R I C A T I O N S H O P

A&E stocks, as well as fabricates, Triten chrome carbide overlay plate and Hardox 400 and 500 for coal chute, pulverizer wear parts and screw conveyors. A&E is experienced with stainless, aluminum, titanium, corten, abrasive resistant, inconel, Carpenter 20 Cb3, Hastelloy, carbon steels and other exotic metals.

Positioning for weld-out of pressure vessel components and wear parts is accomplished with several different types of equipment.



CNC Thermal Burning Center uses either oxyfuel (12" thick max) or plasma-arc (3" max) cutting processes.

Material cutting is performed by well trained personnel utilizing the latest computer aided equipment.



Q U A L I T Y

Quality is an integral part of the overall business plan at A&E. The Quality Control Manager is an American Welding Society (AWS) Certified Welding Inspector (CWI), and also holds a Level II certificate in radiographic testing. Our pressure vessel quality system has been audited and approved by the State of Texas, the American Society of Mechanical Engineers (ASME), and the National Board of Boiler and Pressure Vessel Inspectors. Although the levels of inspection change from one customer to the next, our ASME Quality System is the mainstay of quality for pressure vessel fabrication, and is used as a guideline for all other types of fabrication.

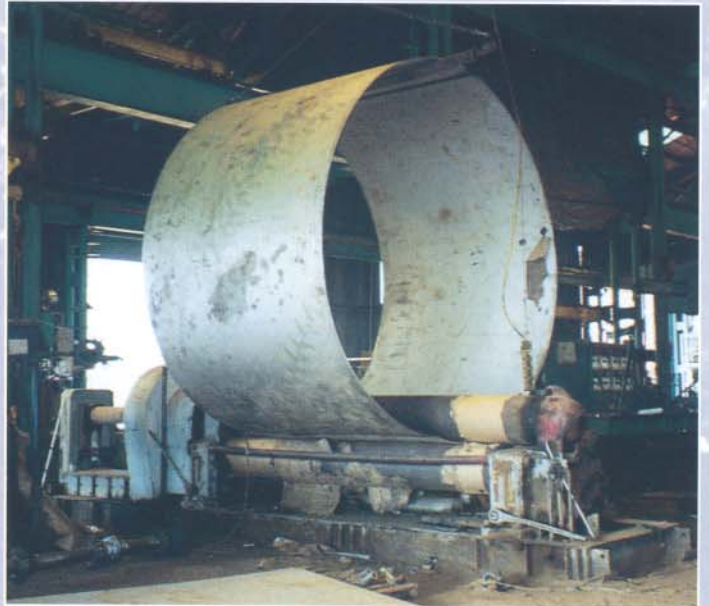
A&E fabricates ductwork, platforms, ladders and structural steel.



▲ **400 ton pressbrake** x 14-ft. forms items such as expansion joints, transitions, chutes, tube shields, eccentric and concentric cones, and pulverizer wear parts.



▲ **Cincinnati Hydraulic Shear** model 500HSX10 is equipped with microcomputer gage control. A complete shearing sequence can be programmed into the control and accessed by the operator. Capacity ranges up to 1/2" A36 and 3/8" stainless steel x 10' wide.



▲ **Plate rolls** – 1" x 12' long and 3/8" x 10' long.

▲ **Shape rolls:** S12" x 50#, 6 x 6 x 1" ϕ , 3 x 3 x 1/4" ϕ , 6 1/4" O.D. tube

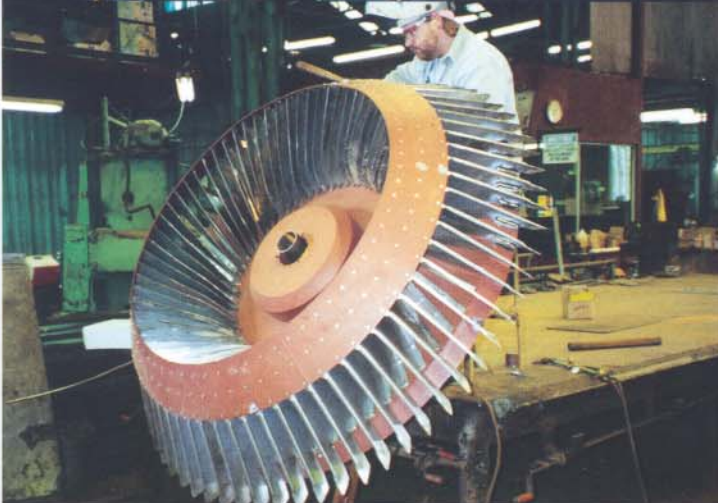
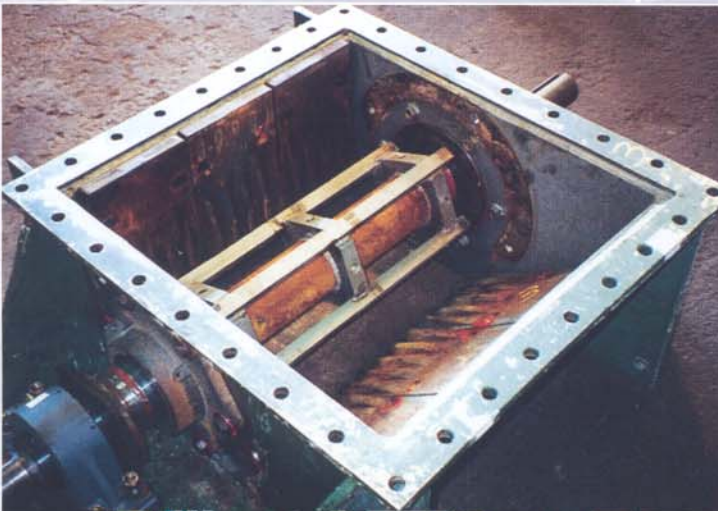




▲ A & E's experienced engineers and designers use the latest computer techniques for design and drafting. Estimating programs greatly improve the turn-around time on quotations. Technology and experience enable us to respond to your needs without sacrificing accuracy. We can also access microfilm drawings with our Dodge scan.

R E P A I R

Experienced A&E millwrights, machinists and welders repair numerous items such as clinker grinders, fan impellers, coal crusher rotors, dragline parts, and crosspit spreader components.



CRANE RENTAL/DELIVERY



◀ A&E crane rental: two each 15-ton with 80-ft. reach, two each 18-ton with 80-ft. reach, one 40-ton with lattice boom and jib (164-foot reach).



▲ To better serve our customers, A & E has a fleet of delivery vehicles from 1/2-ton, to 18-wheelers. We're ready when you are!



A & E has served the needs of industry since 1965. Our stability has contributed to our steady growth and has enabled us to attract and retain a diversified staff of



professionals and dedicated employees, some of whom have been with us for more than 20 years. Let the A & E Team serve you on your next project.

OUR SATISFIED CUSTOMERS INCLUDE:

TXU Electric – Generating & Mining
Performance Plastics Products, Inc.
Reliant Energy
Southwestern Electric Power Co.
Weyerhaeuser Co.
Texas Eastman Division, Eastman Chemical Co.
VertexRSI
Lone Star Steel Company
Norit Americas, Inc.

Georgia Pacific
Kellogg/Brown & Root, Inc.
Nucor Steel
H. B. Zachry Company
Western Farmers Electric Co-Op
American Electric Power
Reynolds Metals Co.
International Paper Co.
Nisshin Gulf Coast, Inc.



Purchase with A&E

Cash
Visa
EDI
Customer Purchase Order
Bank Wire Transfer



A&E Machine & Fabrication Co.

F.M. 250, P.O. Box 0190

Lone Star, Texas 75668

Office (903) 656-3485

Fax (903) 656-3489

Modem (903) 656-3386